

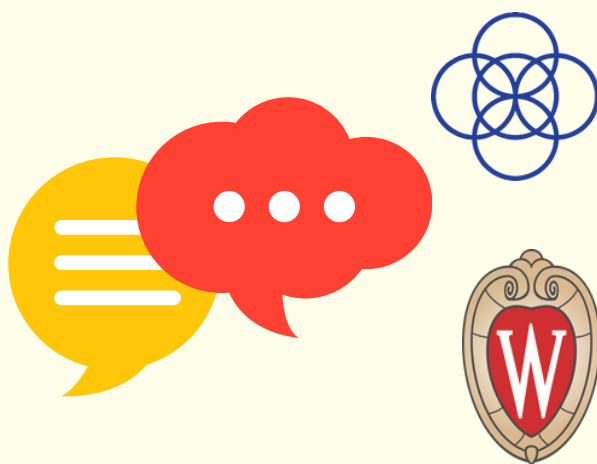
LANGUAGE ACQUISITION AND BILINGUALISM LAB

NEWSLETTER**L.A.B.****SPRING 2025**

Welcome to the official LAB Lab Newsletter! We would like to start by thanking all of the families who have participated in our studies and continuously supported us. Continue reading to find out what we have been up to!

WHAT'S IN THIS ISSUE:

Cover Page.....	1
Meet Our Team.....	2
Community Involvement.....	3
Current Studies.....	4
Conferences.....	5-7
End of Semester/Graduation.....	8
Thank you!.....	9



(608) 263-5764



uwbilingualism@waisman.wisc.edu

1500 Highland Avenue
Madison, WI 53705<https://lab.csd.wisc.edu>

MEET OUR SPRING 2025 TEAM!

PRINCIPAL INVESTIGATOR



MARGARITA KAUSHANSKAYA

LAB MANAGER and SLP



DAVE KURTIS

RESEARCH SPECIALIST



CLARA MERKEL

DOCTORAL STUDENTS



EMMA LIBERSKY



CAITLYN SLAWNY



EMILY BAGAN



EMILY HANSEN

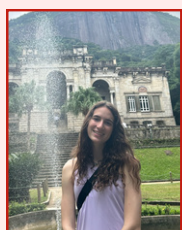


CHENELLE WALKER



DANIELLE HU

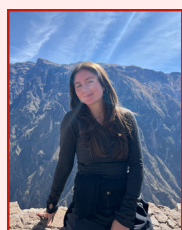
RESEARCH ASSISTANTS



EVELYN ANTON



LEAH BRADLEY



SARA DONOSO



ALLISON EVANS



CARALYN FELCYN



FIONA FREEMAN



ARYN FRIEDMAN



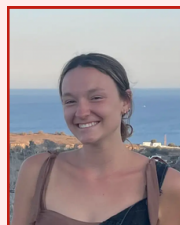
LILY GISSAL



DECLAN HALLORAN



BHANU LAKSHMI HARIKUMAR



MADDIE HAUENSTEIN



ELLEN HERRALD



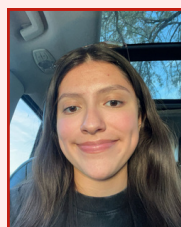
YANA KRUTNYK



LEANNE LOW



KATHARINE MEYER



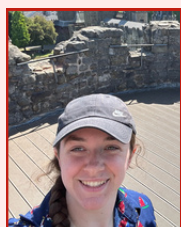
LUPITA PEREZ



GABRIELA STARK-TORRENTERA



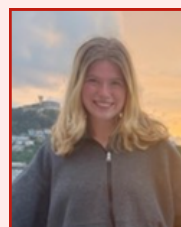
ALEXIS THEODORE



MAGGIE THOMAS



GRACE WHEELAN TWEEDT



HANNAH WAHL



GABRIELA WOLF

COMMUNITY INVOLVEMENT

MADISON CHILDREN'S MUSEUM: AVENTURAS EN ESPAÑOL

Our LAB team has been partnering with the Madison Children's Museum during their "Aventuras en Español" monthly series. This is a free bilingual event that works to create a fun space for cultural celebration and conversations in Spanish! Each event incorporates art projects, music, and other activities. We are delighted to have this opportunity to work closely with Samira, the organizer of this event and founder of *Mis Emociones*!



During the Día de los Libros event, Clara, Katharine, Samira, and her two daughters smile while holding up "Si yo tuviera una púa," a book on friendship.



Standing by our recruitment table, Katharine hands out flyers and answers questions from families about our research opportunities!

VERONA AREA FIRST FIVE YEARS: BILINGUAL PLAY & LEARN GROUP

"This spring I had the privilege of attending the Play and Learn sessions run by Gennine at the Boys and Girls Club of Dane county. We hosted both monolingual and bilingual children ranging from 5 months to 5 years, and played matching games, built towers with blocks, and created different zoos with the animal toys. This was an absolutely unforgettable experience!"

-Maggie



Upcoming LAB Lab Summer Events

AVENTURAS EN ESPAÑOL

Location: Madison Children's Museum

Dates: June 5th, July 17th, and August 21st

Time: 5:00 PM – 7:30 PM

MERCADITO

Location: Centro Hispano of Dane County

Dates: June 12th and July 10th

Time: 4:00 PM – 8:00 PM

CURRENT STUDIES & RECRUITMENT

Our research team is consistently developing new research studies that will help us better understand the complex and remarkable processes of language learning. We are grateful to work with each and every one of you, as participants, to help carry out this important research.

Check out our current studies to see if you may qualify!

DUAL LANGUAGE LEARNING IN YOUNG CHILDREN WITH ASD

WHO?

18-36 month old children who hear **Spanish** in the home, **with or without suspected autism**



Compensation:

\$120 - \$205
for 3-4 sessions



Location:

In-person (Waisman Center)

TALKING LATE IN TWO LANGUAGES STUDY

WHO?

2 (24-35 months) and **4 year olds** who hear both **English and Spanish** regularly

Compensation:

\$45 giftcard
for 2 sessions



Location:

In-person (Waisman Center)
or Virtual (Zoom)



LOOK, LISTEN, LEARN!

WHO?

Bilingual (Spanish-English) and **Monolingual** (English) children ages **4 and 5**



Compensation:

\$20 for the first session
\$30 for subsequent sessions



Location:

In-person (Waisman Center)

LEARNING IN TWO LANGUAGES: WORD LEARNING ACROSS ACCENTS AND TIME SCALES

WHO?

Bilingual (Spanish-English) and **Monolingual** (English) children ages **6-9 years old**

Compensation:

\$35 gift card
for 2 sessions



Location:

Virtual (Zoom)



To be considered for both current or future studies, **please email us or fill out our Interest Form here**, redcap.link/lablab, or scan the QR code.



CONFERENCES, PRESENTATIONS, & POSTERS

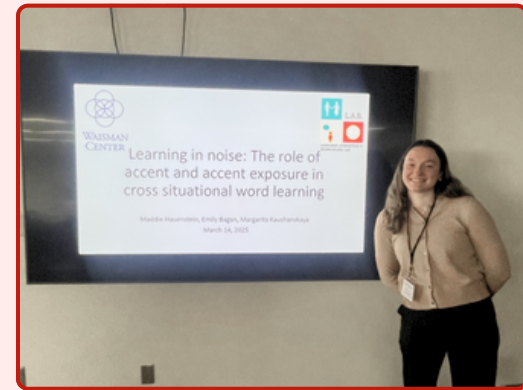
This spring, our lab team was busy preparing presentations and posters! Learn about their projects presented at the Workshop in General Linguistics (WiGL), the Undergraduate Research Symposium, and the BIO 152 Poster Symposium!

LEARNING IN NOISE: THE ROLE OF ACCENT AND ACCENT EXPOSURE IN CROSS-SITUATIONAL WORD LEARNING

MADELINE HAUENSTEIN

Workshop in General Linguistics; March 14 | Undergraduate Research Symposium; April 17

"This study examines how monolingual English-speaking adults learn English-like novel words in native-English and Spanish-accented speech under quiet and noisy conditions."



TOOLS, STRATEGIES, AND RESOURCES IN CORPUS PHONETICS

EMILY BAGAN, LUKE ANNEAR

Workshop in General Linguistics (WiGL); March 15

"We discuss principles of file organization and data reduction, present tools for automated transcription and forced alignment, and methods for querying and modifying your corpus."

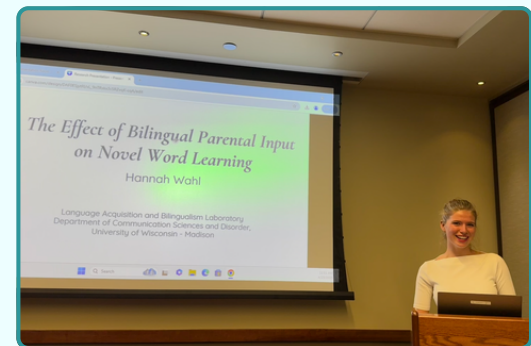


THE EFFECT OF BILINGUAL PARENTAL INPUT ON NOVEL WORD LEARNING

HANNAH WAHL

Undergraduate Research Symposium; April 17

In this study, we teach bilingual preschoolers novel words, comparing two types of bilingual input (one-person one language vs. code-switched) and monolingual input and investigating the influence of code-switching on novel word learning.



ASSESSING THE ROLE OF DUAL LANGUAGE IMMERSION IN SPANISH RETENTION AND LITERACY AMONG NATIVE ENGLISH SPEAKERS

MAGGIE THOMAS

Undergraduate Research Symposium; April 17

"This study looks at language immersion program experience and compares it to language performance. Although we did not find a significant relationship between these two factors, we did find a strong correlation between literacy skills in English and literacy skills in Spanish."



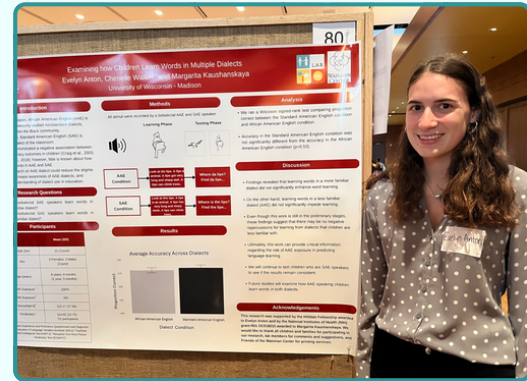
CONFERENCES, PRESENTATIONS, & POSTERS

EXAMINING HOW CHILDREN LEARN WORDS IN MULTIPLE DIALECTS

EVELYN ANTON

Undergraduate Research Symposium; April 17

"This project examined how monodialectal Standard American English (SAE) speakers learn words in a more familiar dialect of SAE and in a less familiar dialect of African American English. Findings revealed that learning words in a more familiar dialect did not significantly enhance word learning, suggesting that there may be no negative repercussions for learning from less familiar dialects."



AFRICAN AMERICAN ENGLISH DIALECT PERCEPTION IN SPEECH-LANGUAGE PATHOLOGY

MARGO FASSBENDER

Undergraduate Research Symposium; April 17

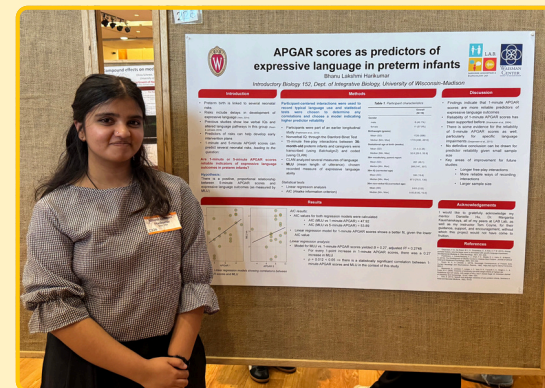
Dialects are valid, rule-based language systems, yet linguistic biases persist toward African American English (AAE). This study explored how Speech-Language Pathologists with varying levels of AAE exposure judge AAE features, and whether levels of AAE exposure influence their judgements about language ability of AAE speakers.

APGAR SCORES AS PREDICTORS OF EXPRESSIVE LANGUAGE IN PRETERM INFANTS

BHANU LAKSHMI HARIKUMAR

Bio 152 Poster Symposium; April 30

"Preterm infants are typically at risk of developing several neurodevelopmental disorders, including potential impairments to language abilities, such as expressive language ability. My study aimed to measure the reliability of 1-minute and 5-minute APGAR scores as predictors of expressive language outcomes."

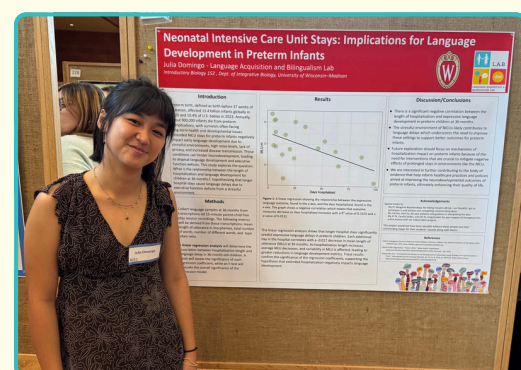


NEONATAL INTENSIVE CARE UNIT STAYS: IMPLICATIONS FOR LANGUAGE DEVELOPMENT IN PRETERM INFANTS

JULIA DOMINGO

Bio 152 Poster Symposium; April 30

This study explored the relationship between the length of hospitalization of preterm infants and their language development at 36 months. There was a significant negative correlation found.



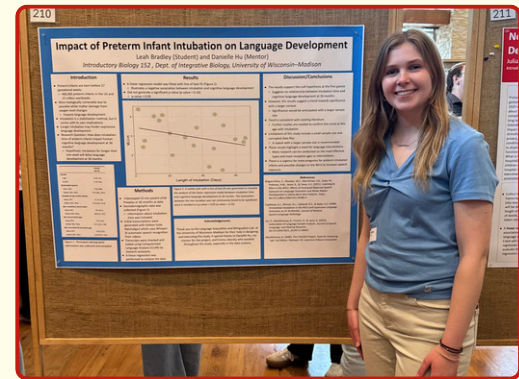
CONFERENCES, PRESENTATIONS, & POSTERS

IMPACT OF PRETERM INFANT INTUBATION ON LANGUAGE DEVELOPMENT

LEAH BRADLEY

Bio 152 Poster Symposium; April 30

This study investigated the impact of the length of intubation time of preterm infants on their cognitive language development at 36 months. Results suggest a negative trend but are not significant.

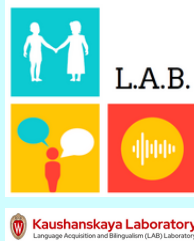


Want to Learn More?



Read more in depth about the research presented at the Undergraduate Symposium by visiting: ugradsymposium.wisc.edu/

Visit our webpage and click on our "research" subpage to see past publications and posters: lab.csd.wisc.edu/posters/



AWARDS FOR MENTORING UNDERGRADUATES

Each year the Office of the Provost and Division for Teaching and Learning recognize 10 individuals who have demonstrated excellence in mentoring undergraduates. Across campus, these awarded mentors can range from professors, to advisors, to research scientists, to graduate students - all with the one goal of supporting undergraduates both professionally and personally during their Wisconsin Experience. This year, our very own, **Emma Libersky**, won this distinguished award! Congratulations Emma!



"Emma goes above and beyond by answering questions, offering individualized instruction, and creating opportunities for students to practice and conduct testing independently. Beyond the technical aspects of research, Emma cultivates a strong sense of community and belonging within the lab. She takes the time to get to know each research assistant as individuals, fostering an inclusive and supportive environment."

-Yana and Grace

END OF SEMESTER & GRADUATION!

SPRING LAB GATHERING

At our annual LAB lab gathering, we all got together to celebrate finishing up spring semester and take time to catch up while eating Babcock ice-cream! We got to reflect on everyone's accomplishments, personally and academically, and think about our next goals together. We also had a blast shouting-out our research assistants that are graduating!



CELEBRATING GRADUATION!

We had a total of **14 Research Assistants** graduate this Spring! We thank them for all that they did within the lab and wish them the best on their next journeys!



Congratulations!

Evelyn Anton
Allison Evans
Fiona Freeman
Aryn Friedman
Maddie Hauenstein
Danielle Hu
Ellen Herrald

Katharine Meyer
Lupita Perez
Gabriela Stark-Torrentera
Alexis Theodore
Maggie Thomas
Grace Wheelan Tweedt
Hannah Wahl

THANK YOU!



Thank you all for your continued support! We are excited to see what summer brings, and we hope to see you all at events or within the lab! Please stay tuned for upcoming issues of our Newsletter.

As always feel free to reach out to us by email, uwbilingualismmlab@waisman.wisc.edu, or phone, (608) 263-5764.